



# PROINVEST

Unlimited Steel Solutions



## PROINVEST

Infrastructure

### MBS<sup>®</sup> N2W4

### Sistem parapet deformabil lateral



[www.proinvestgroup.ro](http://www.proinvestgroup.ro)  
[office@proinvestgroup.ro](mailto:office@proinvestgroup.ro)

# Descriere/Description

## Caracteristici tehnice

Greutate	kg/ml	13,80
Inaltime de la sol	mm	770 +/- 20
Adancime de fixare	mm	985
Dimensiune transversala	mm	205
Distanta dintre stalpi (centru la centru)	mm	4000
Lungime minima	m	60
Zincare		EN ISO 1461

## Detalii

### ① Stalp

- Tip: "C120" 120 x 55 x 20 mm
- Inaltime: 1700 mm
- Grosime: 4 mm
- Otel: S 355 JR
- Conform EN 1317-5



### ② Lisa

- Tip: 2 ondule
- Dimensiune: 4300 x 310 x 80 mm
- Grosime: 2,5 mm
- Otel: S 355 JR
- Conform EN 1317-5



### ③ Suruburi

- Tip: M16 x 27
- Cap rotund si nas
- Conform ANSI B18.5.2.1M



### ④ Saibe

- Tip: M16
- Saiba plata

### ⑤ Piulite

- Tip: M16

### ⑥ Suruburi

- Tip: M10 x 45
- Clasa: 8.8
- Conform ANSI B18.5.2.1M

### ⑦ Saibe

- Saiba patrata

### ⑧ Piulite

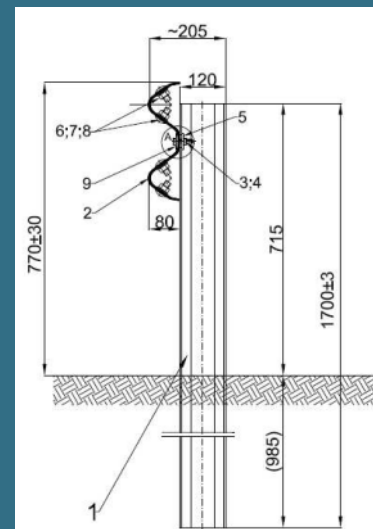
- Tip: M10

## Performante

Nivel de protectie	N2W4		
Deformarea dinamica	m	1,20	
Latime de lucru (W)	m	Vehicul greu	Vehicul usor
		1,3 (W4)	1,3 (W4)
Nivel de severitate a socului "ASI"	A (0,50)		



1833-CPR-0055



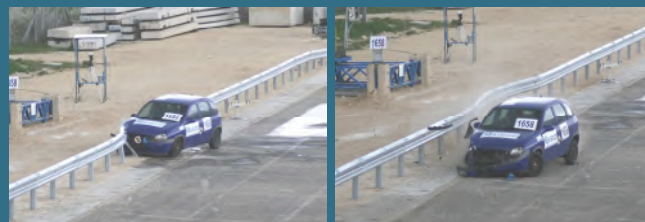
## Test de impact TB 32

Vehicul greu - 1500 kg • Viteza - 110 km/h • Unghi de impact - 20°



## Test de impact TB 11

Vehicul usor - 900 kg • Viteza - 100 km/h • Unghi de impact - 20°



PROINVEST GROUP SRL

Gradinitei 1, 705200 Pascani, Romania

T: +40 232 760 050, F: +40 232 760 040

office@proinvestgroup.ro, www.proinvestgroup.ro